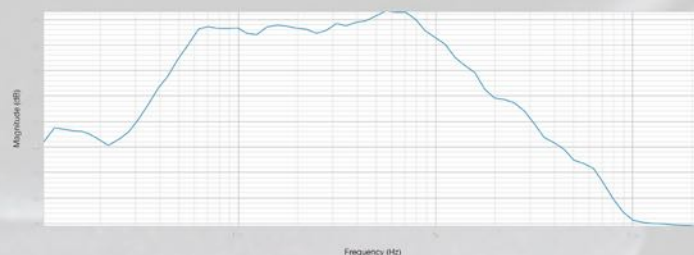


# Apt-SC206 Specification Sheet.

## Image



## Frequency Response

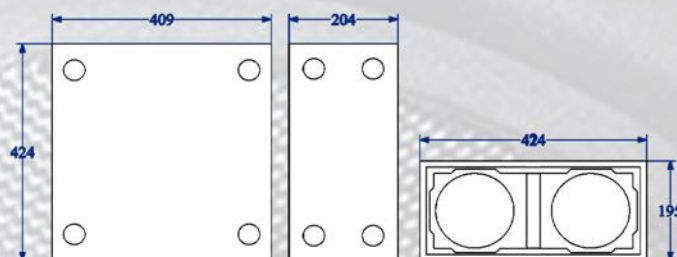


## Specification:

|                            |                                       |
|----------------------------|---------------------------------------|
| <b>Rated Power (AES):</b>  | 400w                                  |
| <b>Rated Impedance:</b>    | 4Ω                                    |
| <b>SPL (1w1m):</b>         | 95dB                                  |
| <b>SPL max:</b>            | 125dB                                 |
| <b>Frequency response:</b> | 60Hz - 400Hz                          |
| <b>Component:</b>          | 2 x 6" Neodymium cast woofer          |
| <b>IP rating:</b>          | IP20                                  |
| <b>Enclosure:</b>          | 12mm Birch ply                        |
| <b>Finish:</b>             | Black, White or *Custom colour        |
| <b>Connector:</b>          | 2x Neutrik Speakons or **binding post |
| <b>Weight:</b>             | 8Kg                                   |

## Dimensions

**Dimensions (HWD):** 204, 409, 424mm



## Recommended Settings & Accessory

|                              |                             |
|------------------------------|-----------------------------|
| <b>Crossover settings:</b>   | 60Hz LR 24dB                |
|                              | 125Hz LR 24dB               |
|                              | 150Hz LR 12dB With Top Pack |
| <b>Correction EQ:</b>        | 63Hz, 3dB, 15Q              |
| <b>Amplifier:</b>            | 650w RMS                    |
| <b>Recommended Top Pack:</b> | CLF511, IC5, CNB51          |

\* Custom paint colours may incur extra cost and increase build time.  
 \*\* Binding Post, 4 Pole euro block connector available may increase build time.  
 Feet are not supplied on all cabins that have locations on them  
 Specification can be changed by APT-GB with out prior notice.  
 Apt-GB is trading as part of the GGPM LTD Group.