



# AREC DS-X09 Playout Station

H.264 FHD Decoder with HDMI Output



- Allows for Selecting Up to 9 Video Sources from 1080p IP streams, Mixed and Displays via HDMI Output
- Standards-Based H.264/AVC Video Decoding and AAC Audio Decoding
- Embedded, Standalone Hardware Decoder without a PC



This product complies with the NDI|HX, a technology of NewTek, Inc.

## Display Video Sources from Anywhere

AREC DS-X09 Playout Station can decode IP Streaming directly, making it easy to be viewed on the local display. The IP streaming video sources can be from anywhere via an IP LAN Ethernet connection, including campus studio, real-time lecture seminar, live events, streaming from CDNs, video-on-demand content, IP camera viewing for insect observation or environment monitoring, and security cameras...

Campus Studio



Real-Time Lecture Seminar



Live Surgery



IP Camera Viewing for Nature Observation



Health Education Videos



School Meeting



Digital Signage and e-Bulletin Board



Environment Security



## H.264 Streaming Media Decoder and Playout Station

AREC DS-X09 Playout Station is a high-performance, embedded and standalone device, enabling to decode video and audio over a standard IP network, and output FHD video via the HDMI port.



### Instantly View and Display IP Streams

AREC DS-X09 can decode 1080p IP streaming inputs via an IP LAN Ethernet connection in RTMP/RTP/RTSP/NDI protocols. It employs standard H.264/AVC video decoding and AAC audio decoding, and supports to mix up to 9 streams into 1 HD video from 640x480 to 1080p60 resolution via HDMI interface.

\* DS-X09 supports RTSP protocols with video only.



### User Friendly Multiview Controller

Through AREC Multiview Controller Software, users can select up to 9 streaming videos from numerous sources to play 1 mixed video on the display, making it easy to watch multiple video sources just in one screen.



## Simple-to-Use & Easy Integration

DS-X09 can be simply connected via a HDMI cable to any monitor or screen, you can use AREC Multiview Controller Software to switch output source freely. With available APIs, DS-X09 can be accessed seamlessly for third party integration.



## Adding Streaming Access Points

With the built-in Live Streaming Server feature, every AREC DS-X09 in the network architecture can be used as another streaming access point for content delivery to reduce the load on the origin server and improve the viewing quality for the end users.



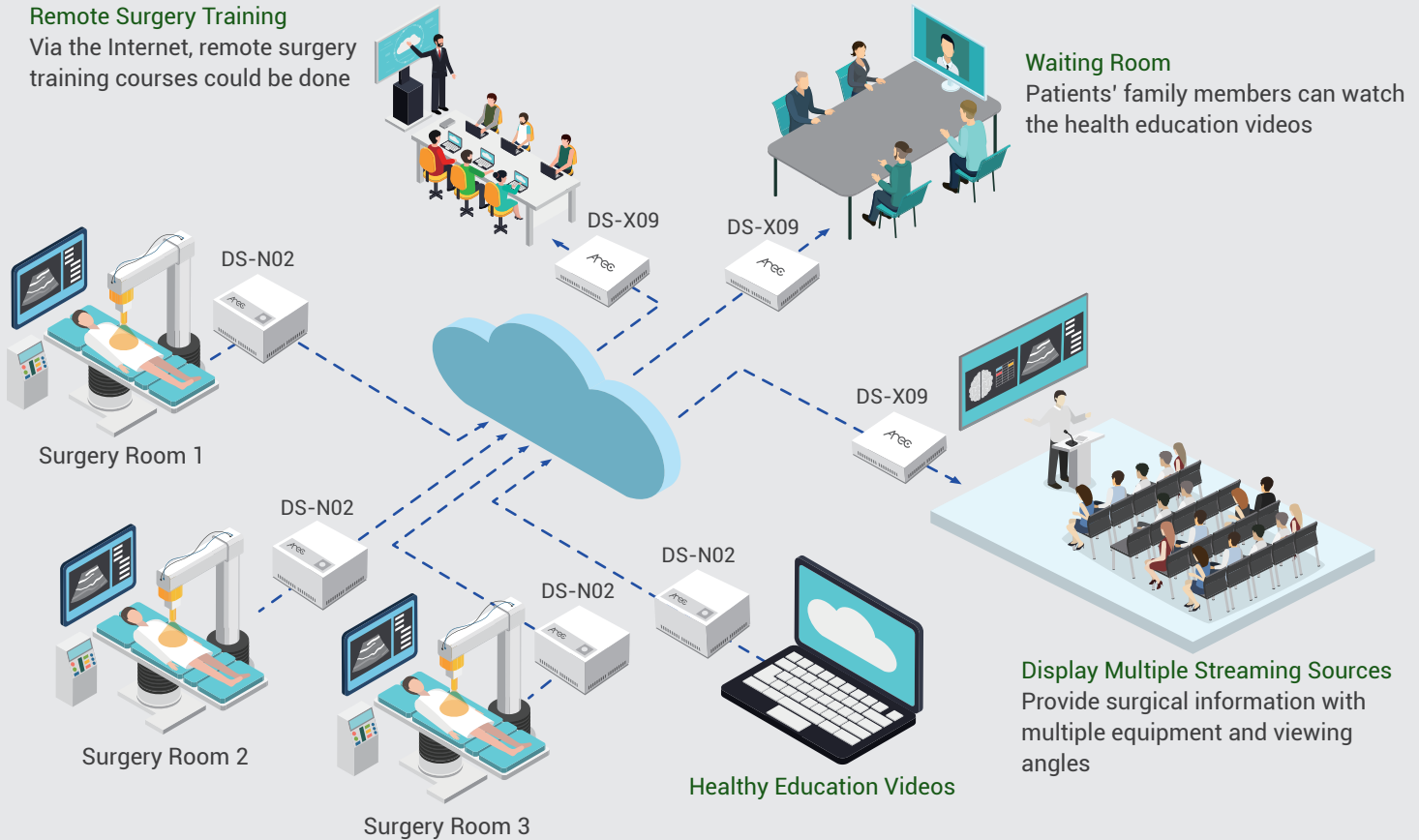
## Hospital Network Architecture Diagram

### Remote Surgery Training

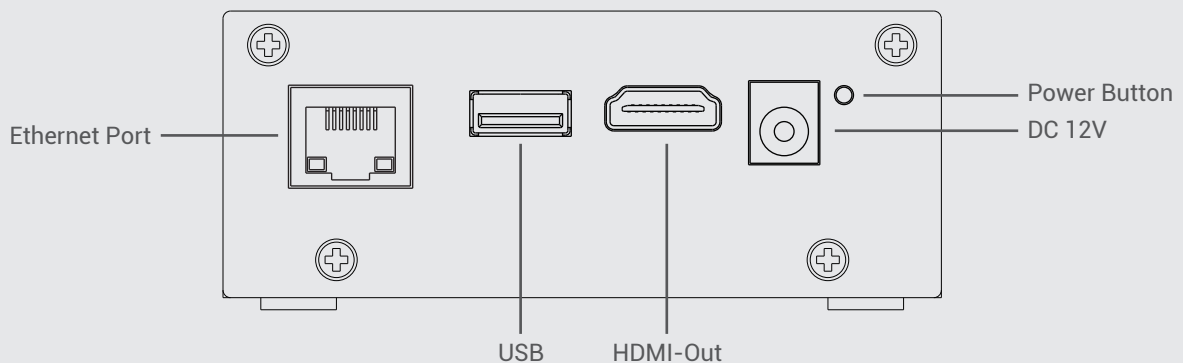
Via the Internet, remote surgery training courses could be done

### Waiting Room

Patients' family members can watch the health education videos



## Product Interface



## Specifications

|                                      |  |
|--------------------------------------|--|
| Model Name                           | DS-X09 Payout Station (H.264 HD Decoder)   |
| <b>Video and Audio Inputs</b>        |  |
| Inputs Interface                     | 1x RJ-45 (IP streaming): numerous streams  |
| Resolution Range                     | H.264 / AVC, max. 1080p60  |
| Compatible Streaming Input Protocols | RTMP (video+audio)<br>RTP (video+audio)<br>RTSP (video only)<br>NDI HX (video+audio) |
| <b>Decoding</b>                      |  |
| Maximum Decode Resolution            | Up to 9 channel sources, up to 1920x1080@60Hz  |
| Video Compression                    | H.264/ AVC   |
| Audio Compression                    | AAC-LC   |
| Live Streaming Server                | Embedded RTMP live-streaming server  |
| Streaming Delay                      | 1 sec.   |
| <b>Local Display</b>                 |  |
| Output Interface                     | 1x HDMI, HDMI 1.4  |
| Output Resolution                    | HDMI: 1080p60  |
| <b>Control Interface</b>             |  |
| Control I/O                          | 1 x USB (Type-A)<br>1 x 100/1000 Mbps Ethernet (RJ-45)                               |
| <b>General Information</b>           |  |
| Operation System                     | Embedded Linux System  |
| Power Supply                         | 12V/3A DC  |
| Power Consumption                    | 25W  |
| Temperature / Humidity               | 0~40°C/ 90%  |
| Chassis Material                     | Metal (Steel)  |
| Chassis Color                        | White  |
| Dimensions (W×H×D)                   | 95 × 80 × 32mm   |
| Weight                               | 330g   |
| Language                             | TC/ English  |
| Accessories                          | Power adapter / quick guide  |

